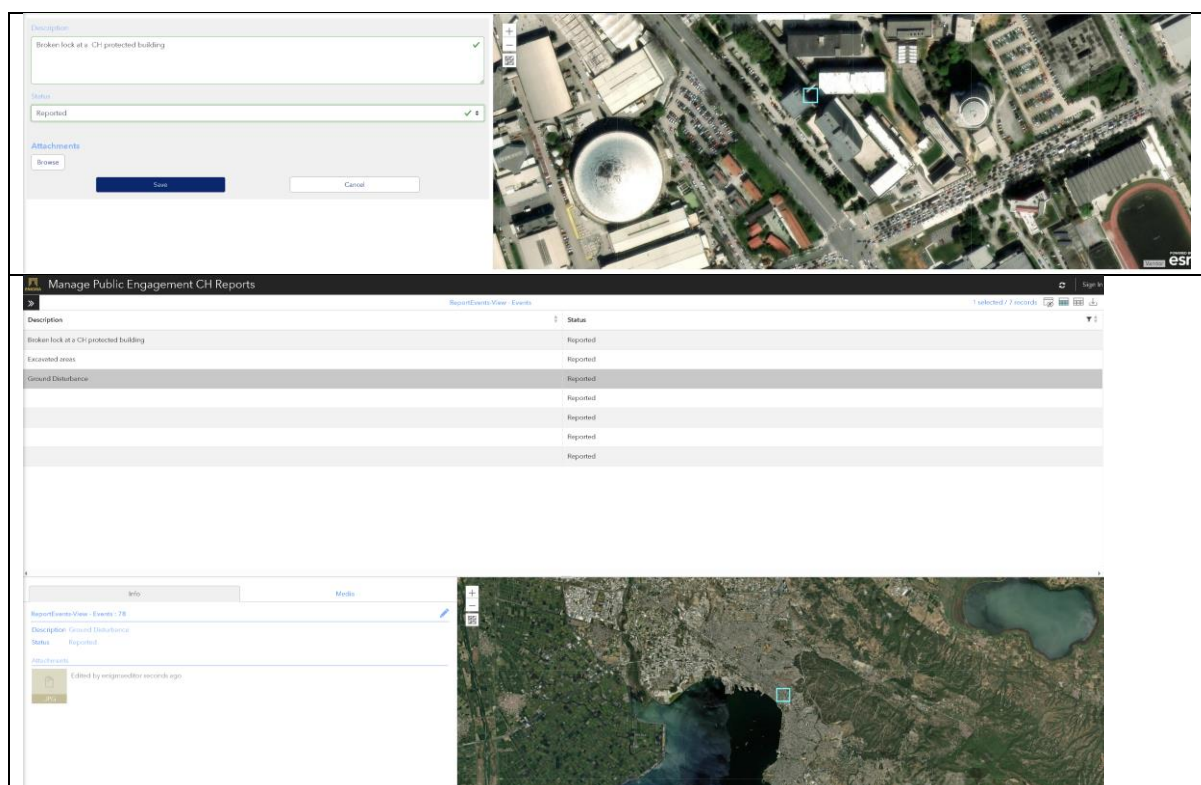


## DESCRIPTION

While crowdsourcing can provide a large volume of data to aid ENIGMA's aims, caution is needed regarding varying levels of accuracy and quality. This best practice outlines the necessity to verify data inputs stemming from public engagement and crowdsourcing, to filter out unreliable or inaccurate user-generated data.

## IDEAL SCENARIO

Crowdsourced data enhances ENIGMA but requires a tiered validation system to verify the accuracy and reliability of data. Level 1 involves an automated check by LEAs for obvious errors (e.g., missing fields, impossible dates). Level 2 routes the data to a LEA for further investigation. Level 3 requires CH expert verification of the data to ensure data reliability.



*Figure: ENIGMA public engagement CH reports management module*

## TIPS

### Do

- Consider all crowdsources information as truthful inputs, even when wrong.
- Trust ENIGMA's tiered verification to amend wrong data inputs.
- Check and verify all crowdsourced data.

### Don't

- Don't skip data quality checks due to the sheer volume of crowdsourcing may provide.
- Don't treat crowdsourced data as reliable, but treat it is well-intended highlights that require further investigation.